

LATTNER

Skid Package B: Boiler, Condensate Return, Blowdown, Water Softener, & Chemical Feed Systems

WHEN CONVENIENCE IS IMPORTANT

Packaged Units

Designed for maximum convenience and minimum foot print, Lattner skid packages are factory assembled, piped, and wired. The Skid Package B includes a boiler, condensate return, blowdown separator, water softener, chemical feed systems, and all necessary internal piping and valves.

Quick, Easy Installation

Minimize installation and design time. Skid packages may be purchased with single point feedwater, gas inlet, power, vent, stack, and drain connections. Skid packages are mounted on structural steel channel-type base for trouble-free forklift positioning.

Optional Features

- Multiple Burner Choices
- Modulating Burners
- Low-NOx Equipment
- IRI Controls
- Digital Displays
- TEFC Motors
- Night Pressure Set-Back Switches
- Stack Thermometers
- Surface Blowdown Systems
- Auto Bottom Blowdown Systems
- Auto Aftercoolers
- Stainless Condensate Systems
- Stand-Alone Condensate Controls
- Condensate Tank Thermometers
- Duplex Condensate Pumps
- Duplex Water Softeners
- Duplex Chemical Feed Pumps
- Water Meters w/Timers



Lattner Boiler Company

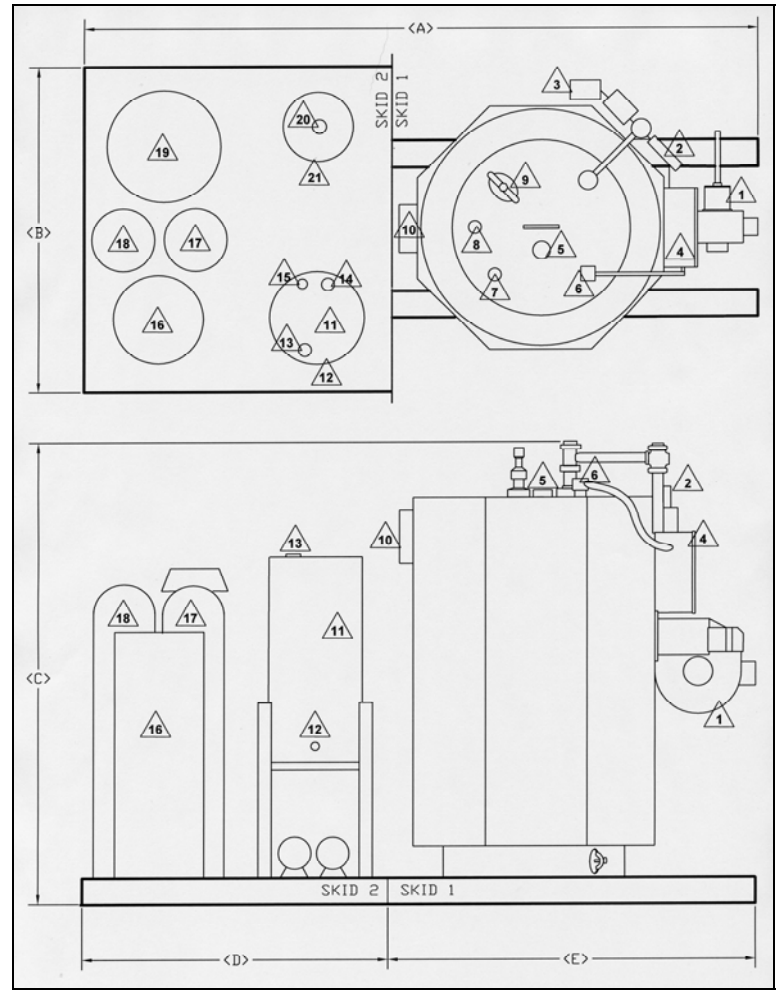
Lattner Boiler Company
1411 9th St. SW
Cedar Rapids, IA 52404
T: (800) 345-1527
F: (319) 366-0770
E: info@lattner.com
W: www.lattner.com

DIMENSIONS, EQUIPMENT, & CONNECTIONS

	A	B	C	D	E
9.5 HP	125"	65"	74"	65"	60"
10 HP	125"	65"	74"	65"	60"
15 HP	125"	65"	74"	65"	60"
20 HP	125"	65"	80"	65"	60"
25 HP	125"	65"	82"	65"	60"
30 HP	144"	65"	83"	70"	74"
40 HP	154"	70"	94"	74"	80"
50 HP	185"	80"	101"	80"	105"

“Lattner’s skid package was easy to install, had a small footprint, and guaranteed that the boiler and its components were piped and connected properly. Most importantly, it saved me time and money on installation.”

- Dry Cleaner (Los Angeles, CA)



	Horsepower	9.5	10	15	20	25	30	40	50
1	Burner	ON/OFF	ON/OFF	ON/OFF	ON/OFF	ON/OFF	LHO	LHO	LHO
2	Pressure Gauge	4"	4"	4"	4"	4"	4"	4"	4"
3	Controls	Honeywell	Honeywell	Honeywell	Honeywell	Honeywell	Honeywell	Honeywell	Honeywell
4	Power	120/1/60	120/1/60	120/1/60	120/1/60	120/1/60	120/1/60	120/1/60	120/1/60
5	Steam Outlet	1-1/2"	1-1/2"	1-1/2"	2"	2"	2"	2-1/2"	3"
6	ALWCO	26M	26M	26M	26M	26M	26M	26M	26M
7	Skimmer	1"	1"	1"	1"	1"	1"	1"	1"
8	Safety Valve	1"	1"	1"	1"	1"	1"	1"	1"
9	Inspection	3" x 4"	3" x 4"	3" x 4"	3" x 4"	3" x 4"	4" x 6"	4" x 6"	4" x 6"
10	Stack Outlet	8"	8"	8"	8"	8"	10"	12"	12"
11	Return System	LV8	LV8	LV8	LV16	LV20	LV25	LV35	LV60
12	Water Inlet	1/2"	1/2"	1/2"	1/2"	1/2"	1/2"	1/2"	1/2"
13	Vent/Condensate	1"	1"	1"	1-1/2"	1-1/2"	1-1/2"	1-1/2"	1-1/2"
14	Vent/Condensate	1"	1"	1"	1-1/2"	1-1/2"	1-1/2"	1-1/2"	1-1/2"
15	Vent/Condensate	1"	1"	1"	1"	1"	1"	1"	1-1/4"
16	Brine Tank	18"	18"	18"	18"	18"	18"	18"	18"
17	Water Softener	12"	12"	12"	12"	12"	12"	12"	12"
18	Water Softener	12"	12"	12"	12"	12"	12"	12"	12"
19	Chemical Feed	24"	24"	24"	24"	24"	24"	24"	24"
20	Blowdown	810	810	810	810	810	1450	1450	1450
21	Vent/Drain	2"	2"	2"	2"	2"	3"	3"	3"



Lattner Boiler Company

Lattner Boiler Company
 1411 9th St. SW
 Cedar Rapids, IA 52404
 T: (800) 345-1527
 F: (319) 366-0770
 E: info@lattner.com
 W: www.lattner.com