

# LATTNER

## Skid Package A: Boiler, Condensate Return, and Blowdown

### WHEN CONVENIENCE IS IMPORTANT

#### Packaged Units

Designed for maximum convenience and minimum foot print, Lattner skid packages are factory assembled, piped, and wired. Skid Package A includes a boiler, condensate return system, blowdown separator, and all necessary internal piping and valves.

#### Quick, Easy Installation

Minimize installation and design time. Skid packages may be purchased with single point feedwater, gas inlet, power, vent, stack, and drain connections. Skid packages are mounted on structural steel channel-type base for trouble-free forklift positioning.

#### Optional Features

- Multiple Burner Choices
- Modulating Burners
- Low-NOx Equipment
- IRI Controls
- Digital Displays
- TEFC Motors
- Night Pressure Set-Back Switches
- Stack Thermometers
- Surface Blowdown Systems
- Auto Bottom Blowdown Systems
- Aftercoolers
- Stainless Condensate Systems
- Duplex Pumps



LATTNER 15 HP  
SKID PACKAGE A

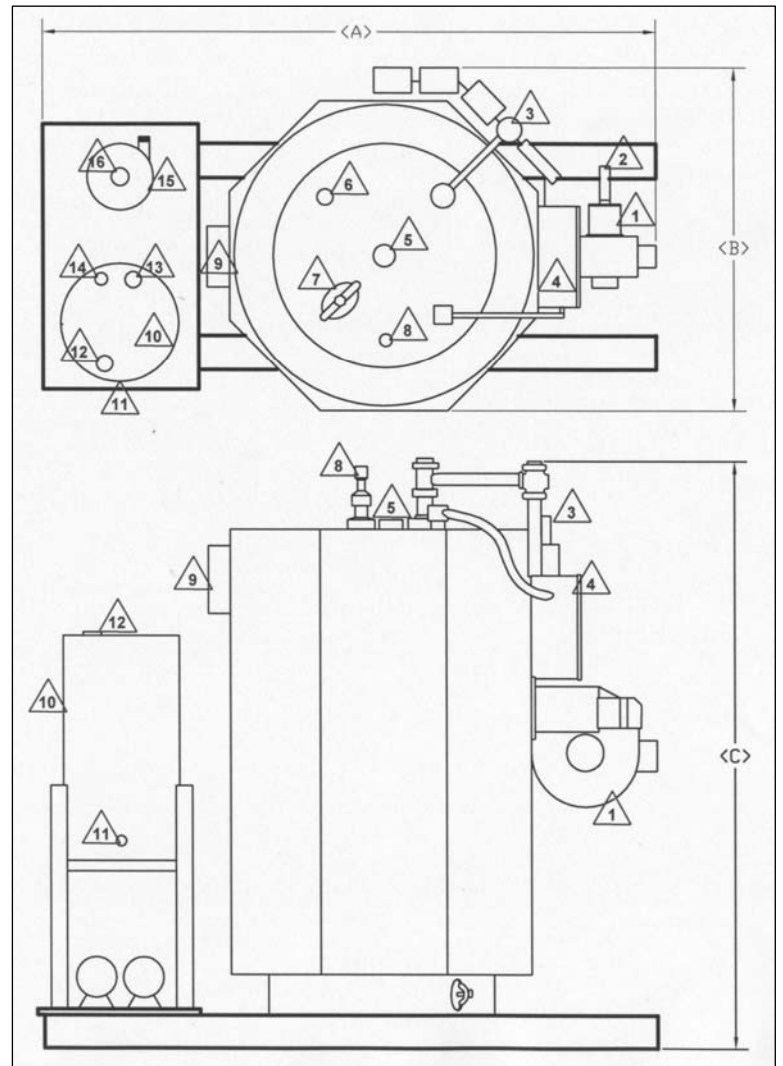


Lattner Boiler Company

Lattner Boiler Company  
1411 9<sup>th</sup> St. SW  
Cedar Rapids, IA 52404  
T: (800) 345-1527  
F: (319) 366-0770  
E: [info@lattner.com](mailto:info@lattner.com)  
W: [www.lattner.com](http://www.lattner.com)

# DIMENSIONS, EQUIPMENT, & CONNECTIONS

	A Depth	B Width	C Height
9.5 HP	90"	49"	74"
10 HP	90"	49"	74"
15 HP	90"	49"	74"
20 HP	90"	49"	80"
25 HP	90"	49"	82"
30 HP	110"	59"	83"
40 HP	120"	63"	94"
50 HP	140"	80"	101"



“Lattner’s skid package was easy to install, had a small footprint, and guaranteed that the boiler and its components were piped and connected properly. Most importantly, it saved me time and money on installation.”

- Dry Cleaner (Los Angeles, CA)

	Horsepower	9.5	10	15	20	25	30	40	50
1	Burner	ON/OFF	ON/OFF	ON/OFF	ON/OFF	ON/OFF	LHO	LHO	LHO
2	Gas Inlet	1"	1"	1"	1"	1"	1"	1-1/2"	1-1/2"
3	Controls	Honeywell	Honeywell	Honeywell	Honeywell	Honeywell	Honeywell	Honeywell	Honeywell
4	Power	120/1/60	120/1/60	120/1/60	120/1/60	120/1/60	120/1/60	120/1/60	120/1/60
5	Steam Outlet	1-1/2"	1-1/2"	1-1/2"	2"	2"	2"	2-1/2"	3"
6	Skimmer	1"	1"	1"	1"	1"	1"	1"	1"
7	Inspection	3" x 4"	3" x 4"	3" x 4"	3" x 4"	3" x 4"	4" x 6"	4" x 6"	4" x 6"
8	Safety Valve	1"	1"	1"	1"	1"	1"	1"	1"
9	Stack Outlet	8"	8"	8"	8"	8"	10"	12"	12"
10	Return System	LV8	LV8	LV8	LV16	LV20	LV25	LV35	LV60
11	Water Inlet	1/2"	1/2"	1/2"	1/2"	1/2"	1/2"	1/2"	1/2"
12	Vent/Condensate	1"	1"	1"	1-1/2"	1-1/2"	1-1/2"	1-1/2"	1-1/2"
13	Vent/Condensate	1"	1"	1"	1-1/2"	1-1/2"	1-1/2"	1-1/2"	1-1/2"
14	Vent/Condensate	1"	1"	1"	1"	1"	1"	1"	1-1/4"
15	Blowdown	810	810	810	810	810	1450	1450	1450
16	Vent/Drain	2"	2"	2"	2"	2"	3"	3"	3"

Steam . . .  
safe, sure, simple



Lattner Boiler Company

Lattner Boiler Company  
1411 9<sup>th</sup> St. SW  
Cedar Rapids, IA 52404  
T: (800) 345-1527  
F: (319) 366-0770  
E: [info@lattner.com](mailto:info@lattner.com)  
W: [www.lattner.com](http://www.lattner.com)